

# Scimitar 1010



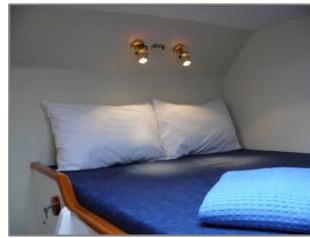
**Whitsunday  
Private  
Yacht  
Charters**

18 Abel Point Marina  
PO Box 800  
AIRLIE BEACH QLD 4802,  
AUSTRALIA

Free Phone: 1800 075 055  
Phone: **07 4946 6880**  
(Int. +61 7 4946 6880)

Fax: 07 4946 4943  
(Int. +61 7 4946 4943)

wpyc@whitsunday-yacht.com.au  
www.whitsunday-yacht.com.au



## SPECIFICATIONS

Length - metres	10.90
Beam - metres	5.00
Draft - metres	1.50
Headroom - metres	2.00
Fresh Water Capacity - litres	650

## ENGINE

Inboard Diesel - hp	2 x 125
Fuel Capacity - litres	640
Average Speed - knots	10
Approx fuel used per engine hr – lts	15
Dinghy with 6hp Outboard	Yes
Wheel Steering	Single
Electric Anchor Winch	Yes

## ACCOMMODATION

Berths: Maximum Passengers	8
Recommended Passengers	2 – 6
Private Cabins – Double / Single	2 / 2
Saloon Berths	1 Dbl
Toilet / Bathroom	1
Hot/Cold Deck Shower	No
Cabin Fans	Yes

## FULLY EQUIPPED GALLEY

Refrigeration - litres	250
Freezer - litres	60
Cockpit Fridge/Freezer – litres	180
2 or 3 Burner Stove & Oven	3
Hot/Cold Fresh Water	Yes

## INSTRUMENTATION

GPS Chartplotter	Yes
Depth Sounder	Yes
Log	Yes
Wind Direction/Speed	N/A
VHF Radio	Yes

## EXTRAS

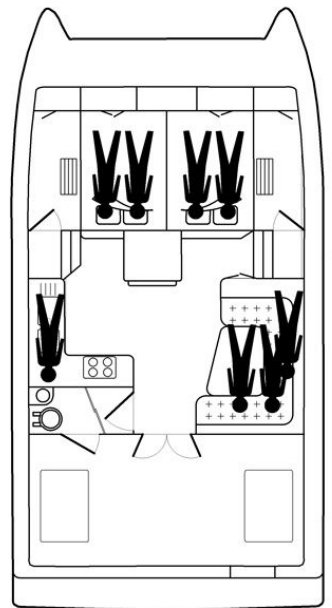
Flatscreen TV / DVD Player	Yes
Stereo Radio / CD Player	Yes
Air-conditioning	Yes
800 Watt Inverter	Yes
240V Sockets - Shore power only	Yes
12V Power / Charge Sockets	Yes
Cockpit Cushions	Yes
Cockpit Table & Cool Bin	No
Stainless Steel LPG BBQ	Yes
Walk-thru transom & Swim Ladder	Yes
Deck Wash	No

## COVERS

Window Shades	Yes
Spray Dodger	N/A
Bimini	N/A
Sun Awning	N/A

## SAILS

Battened Main	N/A
Furling Headsail	N/A



Subject to change without notice